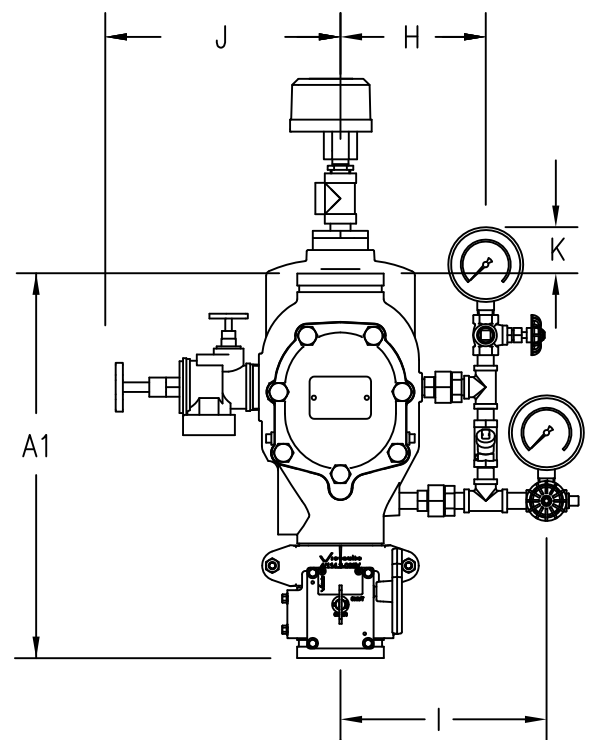
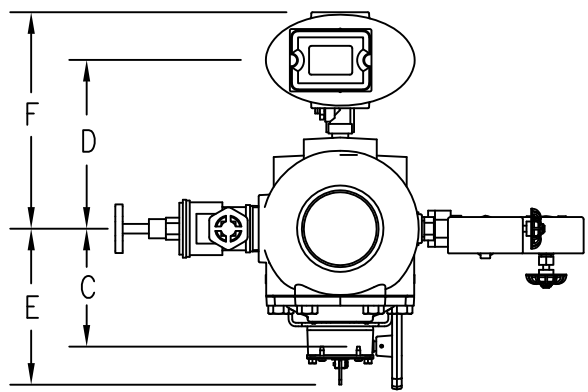
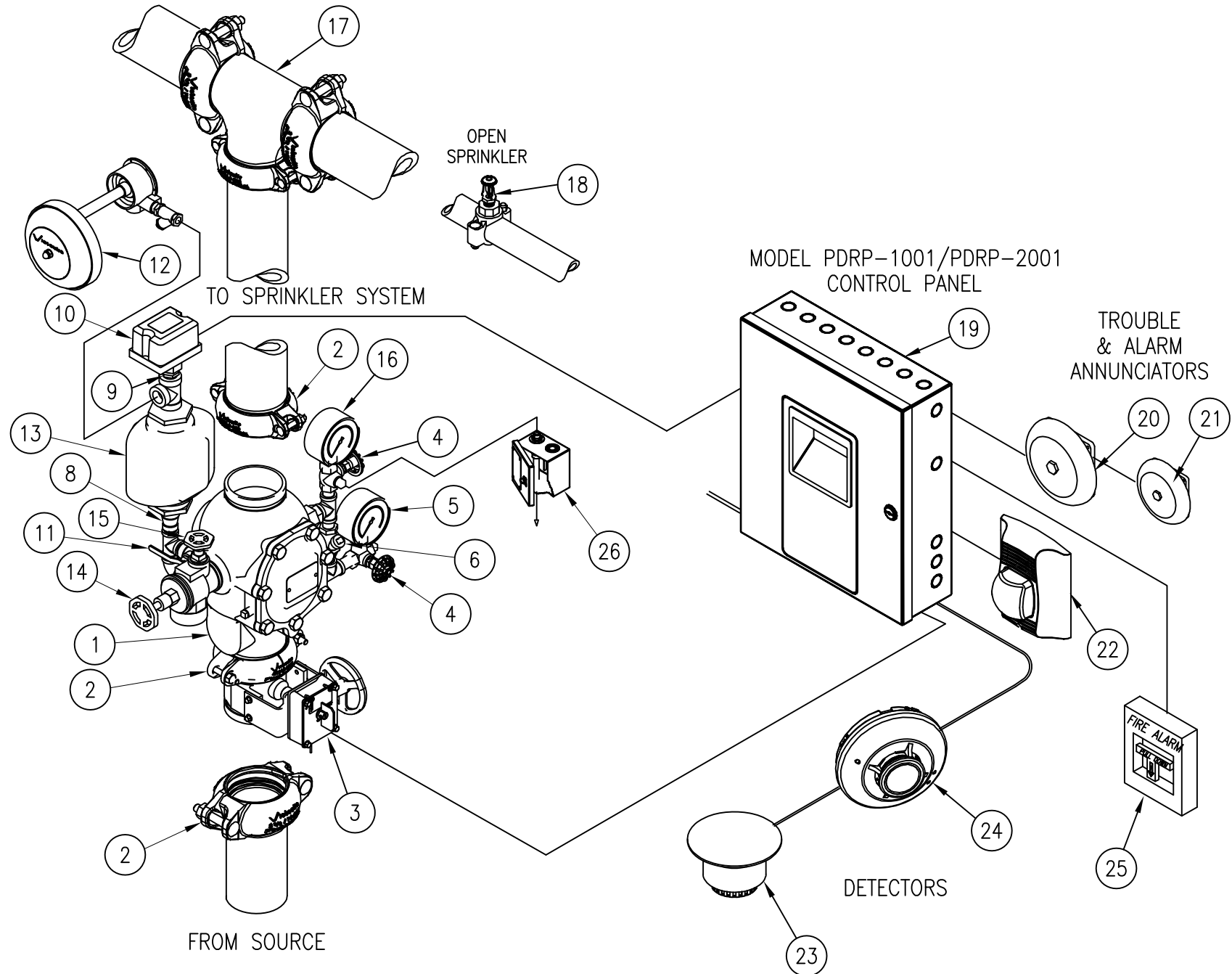


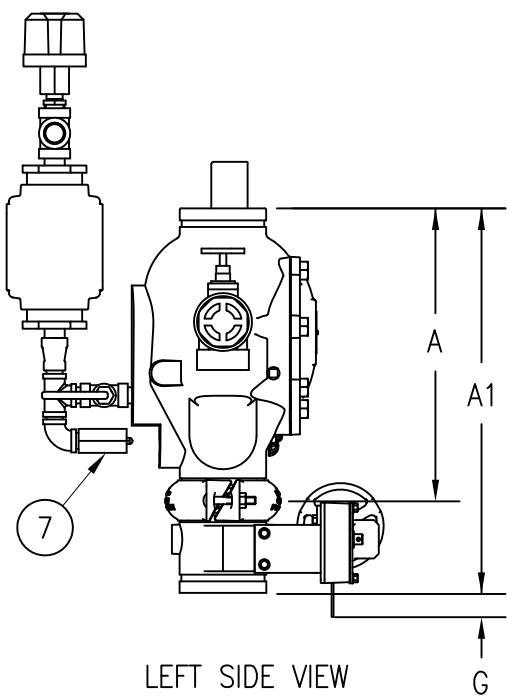
PRODUCT LEGEND	
1	Series 751 FireLock European Alarm Check Valve(see Submittal 30.01)
2	FireLock Rigid Couplings 005, ,009, 009V
3	Water Supply Main Control Valve (Optional)
4	Gauge Valve
5	Water Supply Pressure Gauge (0-25 Bar)
6	Swing Check Valve
7	Restricted Orifice/Alarm Line Drain
8	Reducer
9	Reducing Bushing
10	Alarm Pressure Switch
11	Alarm LINE Ball Valve (Lockable - Normally Open)
12	Series 760 Water Motor Alarm with 19-mm, 100-Mesh Strainer (Optional)
13	Series 749 Auto Drain
14	System Main Drain Valve
15	System Test Valve
16	System Pressure Gauge (0-25 Bar)
17	FireLock Tee 002
18	Upright Sprinkler - Victaulic Model V27 (Open)
19	System Sensor PDRP 1001/PDRP 2001 Control Panel
20	8" Supervisory Bell: System Sensor SSM24-8, 24VDC, Polarized
21	6" Trouble Bell: System Sensor SS24-6, 24VDC, Polarized
22	Horn/Strobe: (Waterflow) System Sensor P2R (RED), 24VDC, Polarized
23	Ion Smoke Detector: System Sensor, 4 Wire, 24 VDC
24	135 Degree rate of rise and fixed temperature Heat Detector System Sensor 5621
25	Electric Pull Station: System Sensor 2099-9754
26	Series 755 Manual Pull Station
SEE VICTAULIC PUBLICATION 10.01 FOR DETAILS OF APPROVALS	
UL/FM APPROVED NYC MEA-248-98-E Volume 3	



FRONT VIEW



PLAN VIEW

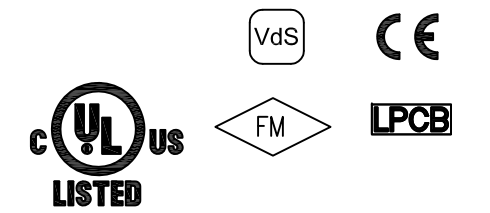


LEFT SIDE VIEW

SERIES 751 FIRELOCK EUROPEAN ALARM CHECK VALVE STATION

Nominal Size Inches	A*	A1	B	B1	C	D	E	F	G	H	I	J	K	APPROX. WEIGHT EA. (kg)
DN80	32.03	42.24	--	71.86	14.48	21.21	22.11	27.56	4.67	18.64	26.93	27.97	--	24.0
DN100	38.18	16.43	57.88	75.97	16.13	22.33	24.45	26.68	2.14	19.33	27.14	30.37	7.22	54.0
DN150	40.64	56.32	64.44	79.38	18.60	25.77	26.93	31.79	--	20.30	28.11	31.08	8.12	69.0
DN200	44.45	58.65	--	85.80	16.66	28.34	26.81	34.39	--	23.85	30.87	34.56	--	83.0

* Measurements denoted with an asterisk take optional equipment into account.



Victaulic CONSTRUCTION PIPING SERVICES DIVISION

PROJECT: 751-VDS PROJ.# _____

CUSTOMER: ... P.O.# _____

SYSTEM: SERIES 751 EUROPEAN ALARM CHECK VALVE STATIONS

REF. DWG.: 10.01 REV K #037

DRN.BY: RGS	DATE: 06/05/09	DRAWING NUMBER	REV.
CHK.BY: .	DATE: .	751-VDS	K