



Victaulic Launches World's First Grooved Mechanical Piping System for Saturated Steam

- World leading manufacturer of mechanical pipe joining systems launches world's first grooved piping system for saturated steam
- Launch includes coupling & fittings suitable for temperatures up to 198°C and pressures up to 1379 kPa
- Grooved steam system removes need for welding, making installation easier, safer and up to five times faster, and makes system maintenance and expansion simple

Gent, Belgium – April 26, 2018 – Victaulic, the world's leading manufacturer of mechanical pipe joining systems, has developed the world's first grooved piping system for saturated steam. Designed for use on commercial and industrial steam applications, the system features the Style 870 rigid coupling, a full line of fittings, a gate valve and a grooving tool to process the Victaulic proprietary OGS-200 groove profile. The Victaulic grooved steam system eliminates the need to weld steam piping, and can work for applications with pressures up to 1379 kPa and temperatures up to 198°C. Thanks to their innovative grooved system, Victaulic steam couplings and fittings make installation and maintenance easier, shorten construction schedules, reduce downtime and maintain safer, more productive worksites.

Joining steam piping with grooved couplings enables faster, easier installation than welding, threading and flanging. During installation, pipe is simply joined by positioning the coupling seal and housing segments on the pipe ends and tightening the bolts and nuts to the specified torque requirement. Installation is completed up to five times faster than other joining methods.

With a union at every joint, the Victaulic steam system enables quick, simple maintenance, reducing downtime. The couplings simplify access to system components and ease pipe replacement and system expansion. Unlike flanged joints, Victaulic Style 870 couplings last the life of the system without regular maintenance. The couplings can also be used as a maintenance solution for existing steam piping, enabling leaks to be fixed quickly and inexpensively.

Because assembling grooved couplings does not require heat or flame, as well as not producing fumes, the Victaulic steam system is much safer, eliminating hazards to employees and property during installation and maintenance. In addition, no hot work permits, fire watches, confined space welding procedures or X-ray inspection of joints are required. Furthermore, the joining process mitigates environmental factors, such as inclement weather conditions, that complicate welding.

Kurt Gobreski, Victaulic Director of Valves and Large Diameter Systems, said, "Engineers have long relied on the superior performance and design flexibility of Victaulic systems, while contractors depend on the total installed cost and time savings. We're pleased to bring these benefits to steam systems for the first time. This tremendous technological advance allows those who design, install and maintain steam systems to experience the absolute confidence that comes with specifying Victaulic."

Victaulic steam system components are designed in accordance with ASME B31.1, ASME B31.3 and ASME B31.9 codes. The Victaulic Style 870 coupling, the Series 871 gate valve, and the fittings – including elbows, tees, reducers, flange adapter nipples, a flexible loop and caps – are available in DN50 to DN200 sizes (2- to 8-inch). The RG1200 grooving tool processes the

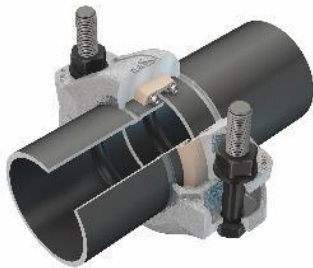


OGS-200 groove into Schedules 40 and 80 carbon steel pipe. OGS-200 roll sets for Victaulic VE268, VE270, VE272, VE416 and VE460 roll grooving tools are also available.

For more information about the Victaulic system for saturated steam, visit <http://www.victaulicsteam.com>.



With a union at every joint, the Victaulic steam system enables quick, simple maintenance, reducing downtime.



Pipe is simply joined by positioning the coupling seal and housing segments on the pipe ends and tightening the bolts and nuts to the specified torque requirement. Installation is completed up to five times faster than other joining methods.



The grooved piping system for saturated steam features the Style 870 rigid coupling, a full line of fittings, a gate valve and a grooving tool to process the Victaulic proprietary OGS-200 groove profile.

###

About Victaulic

Since 1919, Victaulic's pipe joining and flow control solutions have optimized construction productivity and reduced risk, ensuring projects are completed safely, on time and within budget. Driven by a spirit of continuous innovation, Victaulic's portfolio of 100,000+ products and



patented technologies promote freedom of design, as well as simplified inspection and maintenance for the life of any system.

With more than 3,500 employees and 40 international facilities, Victaulic helps customers in over 120 countries succeed in the global construction industry. From the tallest buildings to the deepest mines, customers trust our products to increase overall system durability in the most demanding construction projects and operating conditions. Learn more about how our innovative piping products and design services can engineer confidence into your build at www.victaulic.com.

Contact:

Lucy Bielby

lucy.bielby@hkstrategies.com

+44 (0)20 7413 3085