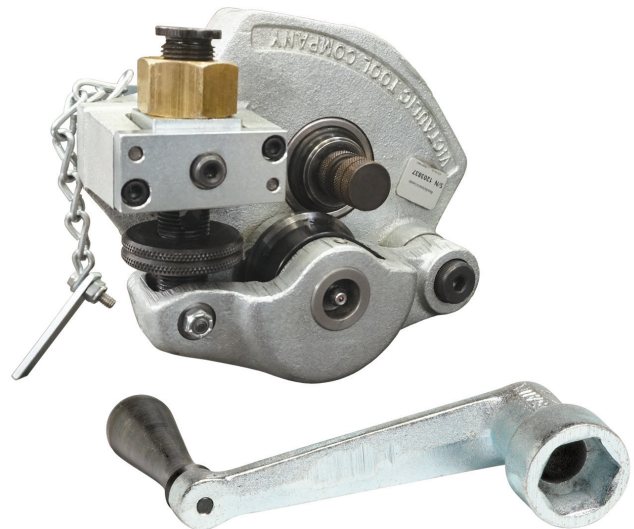

RG1 Roll Grooving Tool



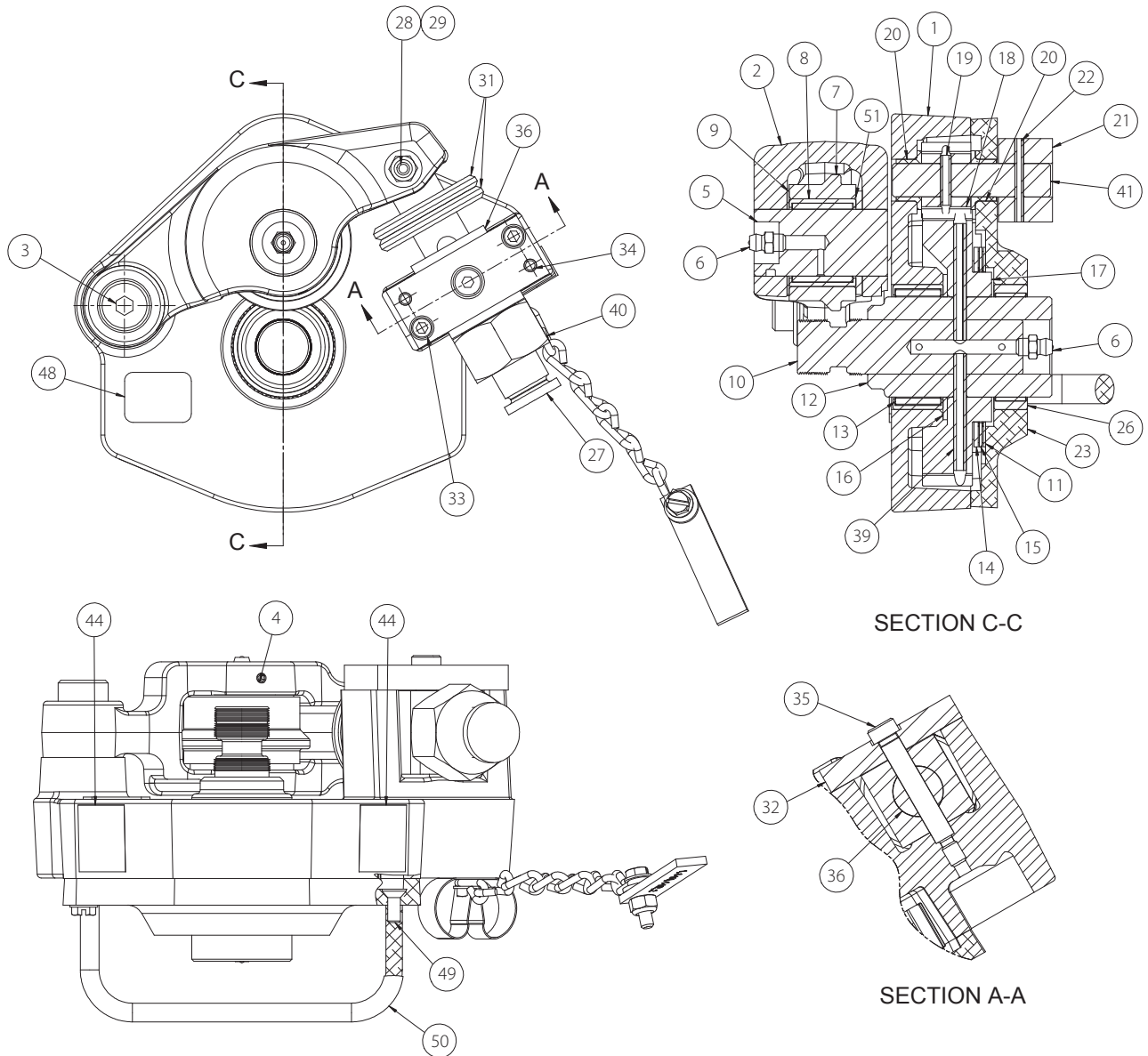
PARTS ORDERING INFORMATION

When ordering parts, the following information is necessary for Victaulic to process the order promptly:

1. Tool Model Number – RG1
2. Tool Serial Number – The Serial Number can be found on the side of the tool.
3. Quantity*, Item Number, Part Number, Description
4. Where to send the part(s) – Company Name and Address
5. To whose attention to send the part(s)
6. Purchase Order Number

Parts may be ordered from your nearest Victaulic Sales Office.

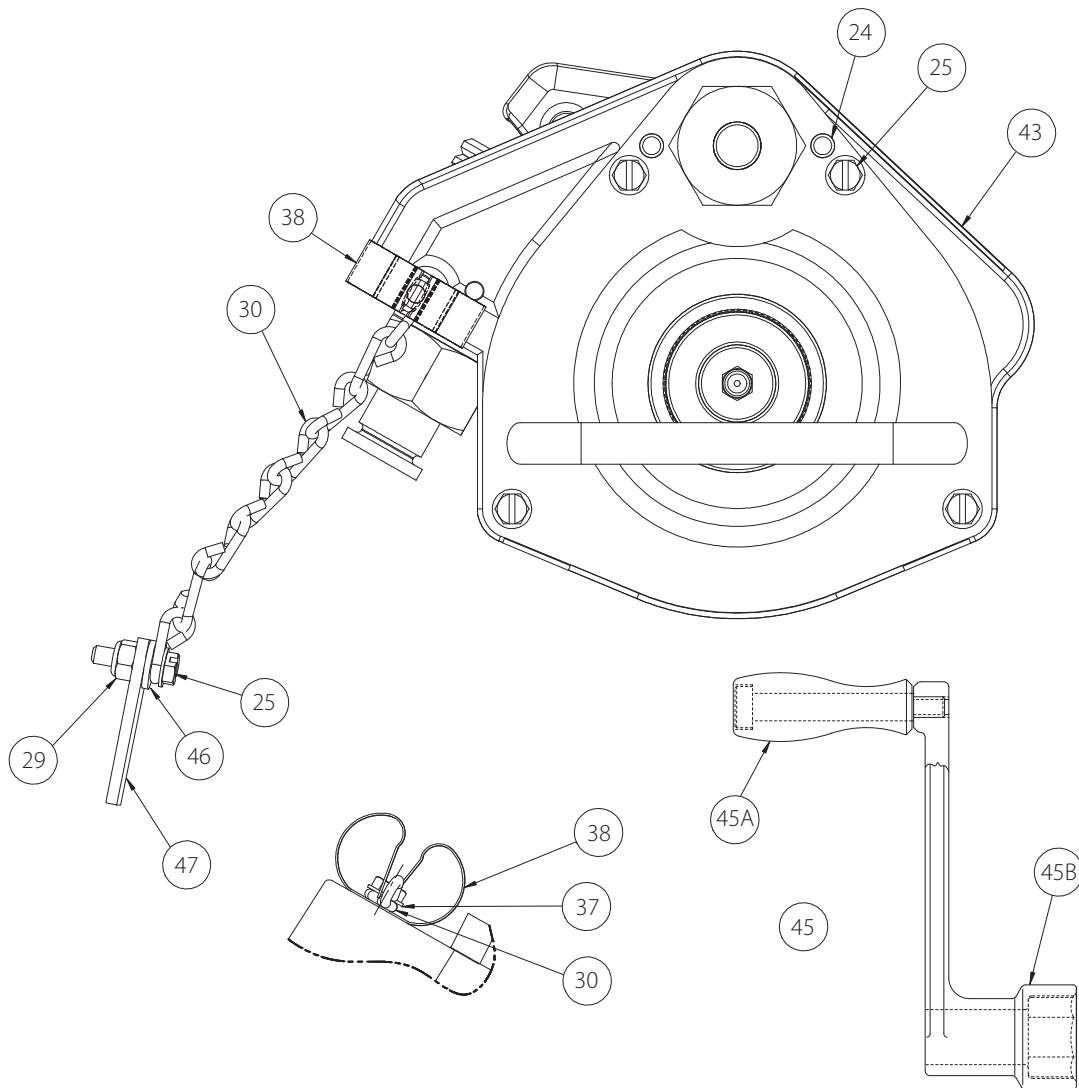
* Quantity given in **Qty.** column indicates total number of pieces required per tool



| Item # | Part # | Qty. | Description |
|--------|------------|------|--|
| 1 | R014012MCH | 1 | Gear Housing, Machining |
| 2 | R0020260FS | 1 | Arm, Machining |
| 3 | NS05080012 | 1 | Shoulder Screw, Hex Socket Head $\frac{1}{2}$ x $\frac{3}{4}$ |
| 4 | NS90010006 | 1 | Set Screw, Hex Socket Head Half Dog Point #10-24 x $\frac{3}{8}$ |
| 5 | R0080260FS | 1 | Upper Shaft |
| 6 | NM01000007 | 2 | Lubrication Fitting, $\frac{1}{4}$ -28 Straight |
| 7 | R901012UA1 | 1 | Upper Roll Assembly, 1-inch IGS |
| 8 | NB02100008 | 1 | Bearing, Needle Roller * |
| 9 | NB05100002 | 1 | Thrust Washer |
| 10 | R901012L01 | 1 | Lower Roll, 1-inch IGS |
| 11 | NB05225001 | 1 | Thrust Washer |
| 12 | R901012A01 | 1 | Lower Roll Adapter, 1-inch IGS |
| 13 | NB02150006 | 1 | Bearing, Needle Roller |
| 14 | NB05225002 | 1 | Thrust Washer |
| 15 | NB03225001 | 1 | Bearing, Thrust Needle Roller |

| Item # | Part # | Qty. | Description |
|--------|------------|------|--|
| 16 | NB05150002 | 1 | Thrust Washer |
| 17 | R017012MCH | 1 | Gear |
| 18 | R015012MCH | 1 | Pinion |
| 19 | NP80000010 | 1 | Pin, Slotted Spring $\frac{5}{32}$ x $\frac{3}{4}$ |
| 20 | NB21050003 | 2 | Bearing, Flanged |
| 21 | R0180260FS | 1 | Drive Nut |
| 22 | NP01002104 | 1 | Pin, Slotted Spring $\frac{1}{8}$ x $1\frac{1}{4}$ |
| 23 | R012012MCH | 1 | Gear Cover Plate, Machining |
| 24 | NP02004012 | 2 | Dowel Pin, $\frac{1}{4}$ x $\frac{3}{4}$ |
| 25 | NS22010012 | 5 | Machine Screw, Hex Washer Slotted Head #10-24 x $\frac{3}{4}$ |
| 26 | NB02150005 | 1 | Bearing, Needle Roller |
| 27 | R0100260FS | 1 | Feed Screw |
| 28 | NS05040104 | 1 | Shoulder Screw, Hex Socket Head $\frac{1}{4}$ x $1\frac{1}{4}$ |
| 29 | NN15010000 | 2 | Locknut, Hex #10-24 |

* Included with Item 7



| Item # | Part # | Qty. | Description |
|--------|------------|------|---|
| 30 | NM09000005 | 1 | Chain, No. 12 Single Jack |
| 31 | R0200260FS | 2 | Narrow Depth Stop Collar |
| 32 | R0130260FS | 1 | Front Plate |
| 33 | NS03010008 | 2 | Cap Screw, Hex Socket Head #10-24 x 1/2 |
| 34 | NP02003012 | 2 | Dowel Pin, 3/16 x 3/4 |
| 35 | NS05050112 | 1 | Shoulder Screw, Hex Socket Head 5/16 x 1 3/4 |
| 36 | R0120260FS | 1 | Trunnion |
| 37 | NS22010006 | 1 | Machine Screw, Hex Washer Slotted Head #10-24 x 3/8 |
| 38 | NT08000003 | 1 | Spring Clip |
| 39 | NP01003112 | 2 | Pin, Slotted Spring 3/16 x 1 3/4 |
| 40 | R0110260FS | 1 | Feed Nut |
| 41 | R016012MCH | 1 | Pinion Shaft |
| 42 | RLA8000010 | 1 | Warning Label ** |

| Item # | Part # | Qty. | Description |
|--------|------------|------|---|
| 43 | R313881LBL | 1 | "C" Diameter Reference Label ** |
| 44 | R027226LBL | 2 | Keep Hands Away Label ** |
| 45 | R3000260FS | 1 | Crank Assembly |
| 45A | NM04000016 | 1 | Revolving Handle |
| 45B | R3010260FS | 1 | Crank Arm |
| 46 | NW01010000 | 1 | Washer, #10 |
| 47 | R0810120FS | 1 | Groove Depth Gauge |
| 48 | R513882LBL | 1 | Serial Number Tag ** |
| 49 | NS09011010 | 2 | Cap Screw, Hex Socket Countersunk Head #10-32 x 5/8 |
| 50 | NM04000001 | 1 | Handle |
| 51 | NB05175004 | 1 | Thrust Washer |

** Refer to the following page for images of product labels

RG1 Roll Grooving Tool

IMAGES OF THE LABELS ON THIS PAGE ARE NOT TO SCALE.

RLAB000010

| ⚠ WARNING | |
|---|------------|
| <p>Failure to follow instructions can result in serious personal injury, property damage, and product damage.</p> <ul style="list-style-type: none"> • Before operating or servicing this tool, read and understand the operating and maintenance instructions manual and all labels located on this tool. • THIS IS A MANUALLY DRIVEN TOOL. DO NOT ATTEMPT TO OPERATE THIS TOOL WITH A POWER DRIVE. • A quarter turn of the depth stop collar will change the groove diameter 0.017 inch/0.4 mm. | |
| 3831 Rev. C | RLAB000010 |

R027226LBL

| |
|---|
| KEEP HANDS AWAY |
| 5183 Rev. B R027226LBL |

R313881LBL

| | SIZE | MAX. SCH. | O.D. | | ø "C" | |
|----------------------------|-------------|--------------|-----------------|-----------------|-----------------|-----------------|
| | | | MAX | MIN | MAX | MIN |
| 13881 Rev. A R313881LBL | 1 [33.7] | 40 | 1.346 [34.2] | 1.300 [33.0] | 1.190 [30.2] | 1.170 [29.7] |

R513882LBL

| |
|---|
| RG1 |
| Manufactured in Canada |
| S/N |
| 1-3882 Rev. A R513882LBL |