

VE46 and VE46P In-Place Groovers



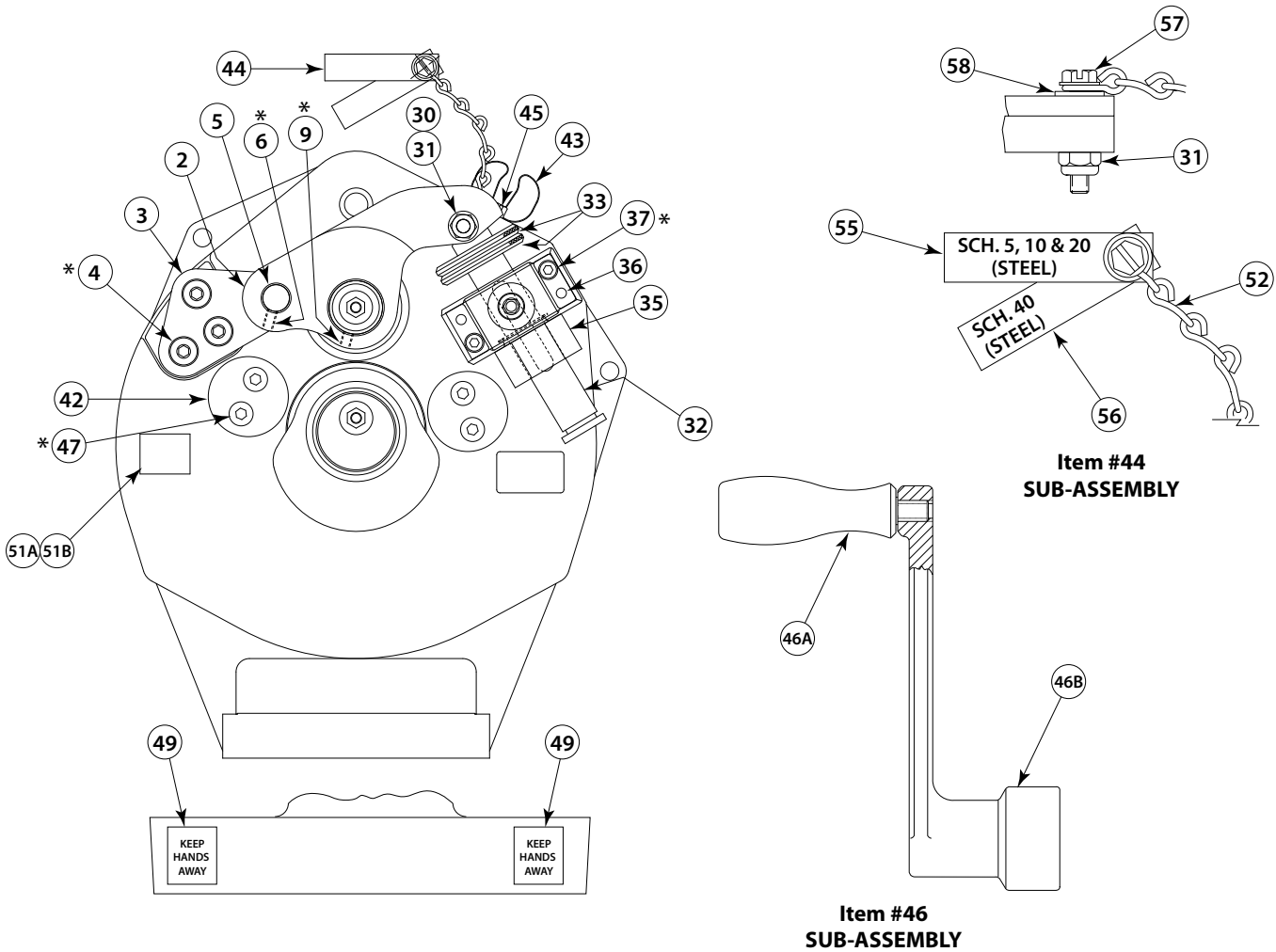
PARTS ORDERING INFORMATION

When ordering parts, the following information is necessary for Victoraulic to process the order promptly:

1. Tool Model Number – VE46 or VE46P
2. Tool Serial Number – The serial number can be found near the handle of the tool.
3. Quantity, Item Number, Part Number, Description
4. Where to send the part(s) – Company Name and Address
5. To whose attention to send the part(s)
6. Purchase Order Number

Parts may be ordered from the nearest Victoraulic Sales Office.

VE46 and VE46P In-Place Groovers



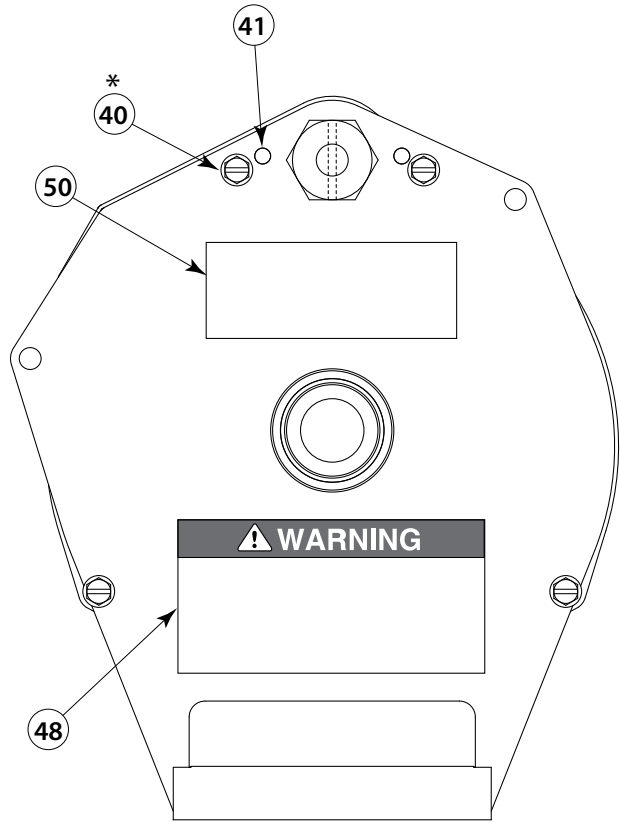
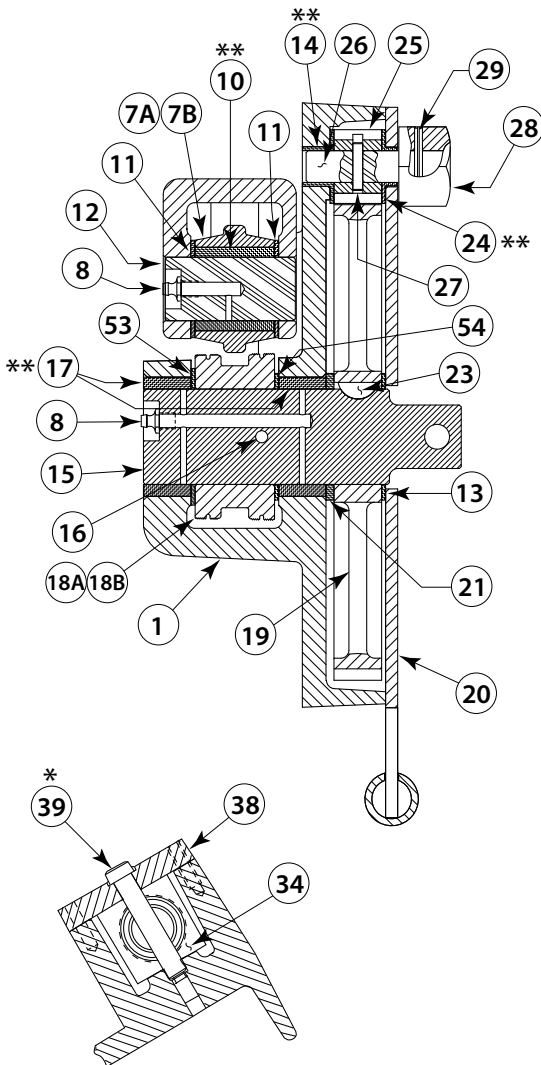
| Item# | Part # | Qty. | Description |
|-------|---------------|------|---|
| 1 | R-013-046-MCH | 1 | Gear Housing |
| 2 | R-012-046-MCH | 1 | Arm |
| 3 | R-006-046-MCH | 1 | Arm Link |
| 4* | N-S05-060-100 | 3 | Shoulder Screw, 3/8 Dia. X 1" Lg., Blk. Ox. |
| 5 | R-010-046-MCH | 1 | Arm Link Shaft |
| *6 | N-S90-010-006 | 1 | Set Screw, #10 - 24UNC X 3/8" Lg. Half-Dog Pt. w/Nylon Insert |
| 7A | R-904-046-UA6 | 1 | Upper Roll Assembly, Steel |
| 7B | R-P04-046-UA6 | 1 | Upper Roll Assembly, PVC/Aluminum |
| 8 | N-M01-000-007 | 2 | Grease Fitting, 1/4 - 28 Straight |
| 9* | N-S90-010-004 | 1 | Set Screw, #10 - 24 UNC X 1/4" Lg. Half-Dog Pt. w/ Nylon Insert |
| 10** | N-B02-100-009 | 1 | Bearing ‡ |
| 11 | N-B05-100-002 | 2 | Thrust Washer |
| 12 | R-007-046-MCH | 1 | Upper Roll Shaft |
| 13 | N-B05-150-002 | 1 | Thrust Washer |
| 14** | N-B21-050-005 | 1 | Flanged Bearing |
| 15 | R-108-046-MCH | 1 | Lower Roll/Gear Shaft |

| Item# | Part # | Qty. | Description |
|-------|---------------|------|--|
| 16 | N-P10-003-204 | 1 | Pin, Driv-Lok Type "C" (Shearproof) 3/16 Dia. X 2 1/4" Lg. |
| 17** | N-B02-150-006 | 2 | Bearing |
| 18A | R-904-046-L06 | 1 | Lower Roll, Steel |
| 18B | R-P04-046-L06 | 1 | Lower Roll, PVC/Aluminum |
| 19 | R-019-046-MCH | 1 | Gear |
| 20 | R-200-046-PLT | 1 | Gear Cover Plate |
| 21 | N-B05-175-003 | 1 | Thrust Washer |
| 23 | N-K01-060-500 | 1 | Woodruff Key, #605 |
| 24** | N-B21-050-004 | 1 | Flanged Bearing |
| 25 | R-015-012-MCH | 1 | Pinion |
| 26 | R-026-046-MCH | 1 | Pinion Shaft |
| 27 | N-P10-003-208 | 1 | Pin, Driv-Lok Type "C" (Shearproof) 5/32 Dia. X 3/4" Lg. |
| 28 | R-018-026-0FS | 1 | Drive Nut |
| 29 | N-P10-003-202 | 1 | Pin, Driv-Lok Type "C" (Shearproof) 1/8 Dia. X 1 1/4" Lg. |
| 30 | N-S05-040-104 | 1 | Shoulder Screw, 1/4 Dia. X 1 1/4" Lg., Blk. Ox. |
| 31 | N-N15-010-000 | 2 | Elastic Locknut #10 - 24 UNC, Pltd. |

Refer to notes on following page.

‡ Included in Item 7A and 7B

VE46 and VE46P In-Place Groovers



NOTES:

* Denotes items to be assembled with No. 242 Loctite.

** Denotes items to be assembled with No. 290 Loctite.

Lube Bearings, Items #10, #17, #32, and #35 with Contractor Special Grease with Moly (NGLI #2), or equivalent.

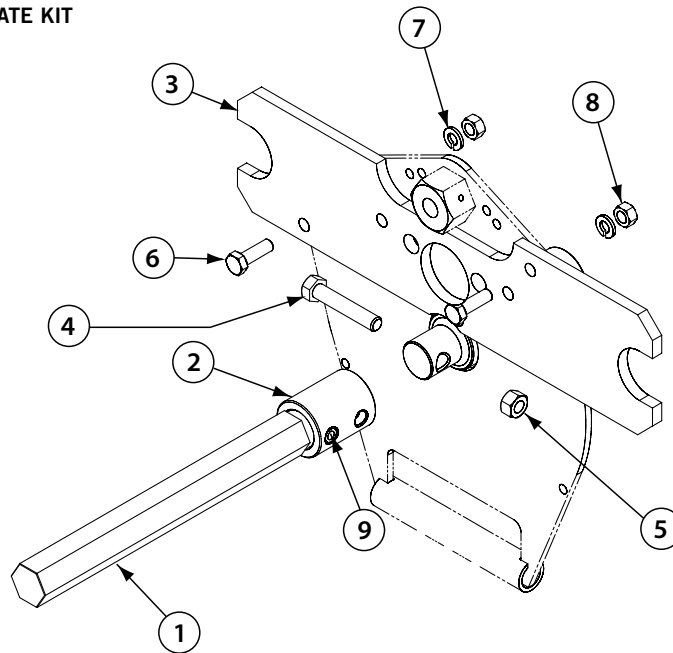
Lube Gear and Pinion, Items #19 and #25, with Lubriplate Extra Heavy Grease Shield or equivalent.

| Item# | Part # | Qty. | Description |
|-------|---------------|------|--|
| 32 | R-009-046-MCH | 1 | Feed Screw |
| 33 | R-020-026-OFS | 2 | Depth Stop Collar |
| 34 | R-012-026-OFS | 1 | Trunnion |
| 35 | R-011-026-OFS | 1 | Feed Nut |
| 36 | N-P02-003-012 | 2 | Dowel Pin, 3/16 Dia. X 3/4" Lg. |
| 37* | N-S03-010-008 | 2 | Socket Head Cap Screw, #10 - 24 UNC X 1/2" Lg., Blk. Ox. |
| 38 | R-013-026-OFS | 1 | Front Plate |
| 39* | N-S05-050-112 | 1 | Shoulder Screw, 3/16 Dia. X 1 3/4" Lg., Blk. Ox. |
| 40* | N-S22-010-008 | 4 | Hex Washer Slotted Head Screw, #10 - 24 UNC X 1/2" Lg., Plttd. |
| 41 | N-P02-004-008 | 2 | Dowel Pin, 1/4 Dia. X 1/2" Lg. |
| 42 | R-054-046-OFS | 2 | Pipe End Stop |
| 43 | N-T08-000-003 | 1 | Spring Clip |
| 44 | R-018-046-MAS | 1 | Groove Depth Assembly for Steel, Aluminum, and PVC |
| 45 | N-S22-010-006 | 1 | Hex Washer Slotted Head Screw, #10 - 24 UNC X 3/8" Lg., Plttd. |
| 46 | R-300-026-OFS | 1 | Crank Assembly |

| Item# | Part # | Qty. | Description |
|-------|---------------|------|--|
| 46A | N-M04-000-016 | 1 | Revolving Handle |
| 46B | R-301-026-OFS | 1 | Crank Arm |
| 47* | N-S26-010-008 | 4 | Screw, #10 - 24 UNC X 1/2" Lg. Flthd. Sock. w/Nylon Insert, Blk. Ox. |
| 48 | R-049-046-LBL | 1 | Warning Label |
| 49 | R-027-226-LBL | 2 | "Keep Hands Away" Label |
| 50 | R-016-046-LBL | 1 | Groove Specifications Label |
| 51A | R-003-046-OFS | 1 | Serial Number Tag, VE46 |
| 51B | R-201-046-LBL | 1 | Serial Number Tag, VE46P |
| 52 | N-M09-000-005 | 1 | Chain, #12 Steel Single Jack (7 Links) |
| 53 | N-B03-150-001 | 1 | Thrust Washer |
| 54 | N-B05-150-001 | 1 | Thrust Washer |
| 55 | R-017-046-MCH | 1 | Gauge, Sch. 5, 10, & 20 |
| 56 | R-020-046-MCH | 1 | Gauge, Sch. 40 |
| 57 | N-S22-010-100 | 1 | #10 - 24 UNC X 1" Lg. Hex Washer Slot Head Screw, Plttd. |
| 58 | N-W01-010-000 | 1 | Flat Washer, #10 Plttd. |

VE46 and VE46P In-Place Groovers

VE46 POWER DRIVE ADAPTER PLATE KIT



| Item# | Part # | Qty. | Description |
|-------|---------------|------|---|
| 1 | R-042-026-PLT | 1 | Drive Shaft |
| 2 | R-044-026-PLT | 1 | Drive Adapter |
| 3 | R-040-026-PLT | 1 | Power Drive Mounting Plate |
| 4 | N-S01-060-032 | 1 | $\frac{3}{8}$ - 16 UNC X 2" Lg. Hex Hd. Bolt, Pltd. |
| 5 | N-N08-060-000 | 1 | $\frac{3}{8}$ - 16 UNC Hex Nut with Nylon Insert, Pltd. |
| 6 | N-S01-050-100 | 2 | $\frac{5}{16}$ - 18 UNC X 1" Lg. Hex Hd. Cap Screw, Pltd. |
| 7 | N-W03-050-000 | 2 | $\frac{5}{16}$ " Lock Washer, Pltd. |
| 8 | N-N01-050-000 | 2 | $\frac{5}{16}$ - 18 UNC Hex Nut, Pltd. |
| 9 | N-P80-007-108 | 1 | $\emptyset \frac{7}{32}$ x 1.50 Lg. Shear-Proof, Type C, Driv-Lok Pin |

NOTE: The part number for the entire assembly is R-075-026-KIT.

For complete contact information, visit www.victaulic.com

RP-VE46 2097 REV F UPDATED 09/2009 RPL0046000

VICTAULIC IS A REGISTERED TRADEMARK OF VICTAULIC COMPANY. © 2009 VICTAULIC COMPANY. ALL RIGHTS RESERVED. PRINTED IN THE USA.

RP-VE46

